

### S-Type Load Cell

The S-type load cell is a versatile unit designed for use in either tension or compression. Constructed of a plated alloy steel or stainless steel, the combined error including the effects of non-linearity and hysteresis is less than 0.02% of the sensor's capacity. These load cells are used in a myriad of applications, from watchband tensile testing to 20 ton cranes.



### Supporting hardware for the S-Type load cells.

1. Eye Bolts
2. Thread Adaptors
3. Spherical Load Buttons (for compression loads)
4. Connecting Links
5. Electrical Isolators
6. Wire Rope Cable Assemblies
7. Eye Nuts
8. Rod Ends



### Shear Beam Load Cell

The shear beam load cell is designed for multiple load cell applications such as industrial floor scales, barrel scales, or medium and low capacity vessel weighing applications. They are constructed of a nickel plated high alloy tool steel and are fully potted to protect from water and moisture damage. Also available in aluminum, stainless steel and hermetically sealed. When used with tank mount assemblies this load cell is ideal choice for vessel weighing and batching systems



### Single Ended Shear Beam Mount

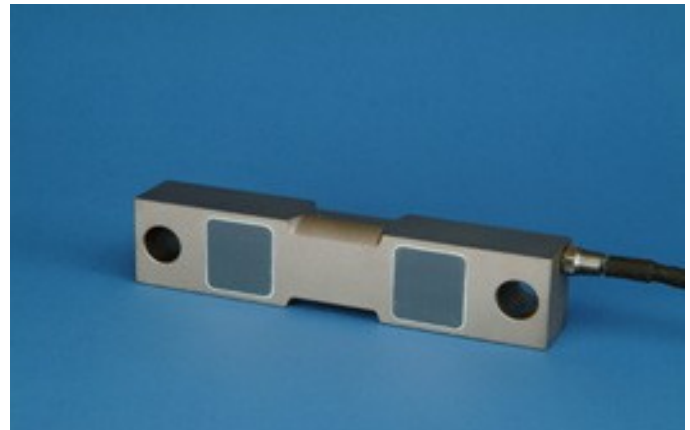
The Single Ended Shear Beam tank mount is designed for use in light to medium capacity tanks, hoppers, and conveyors. The unique spherical washer design combines multidirectional movement with self checking capabilities. Sold in Alloy Steel with Mild Steel Mount, Stainless Steel with Stainless Steel Mount, or Stainless Steel Welded Load Cell with Stainless Steel Mount.

Capacities of 250 lbs to 10,000 lbs



### Double Ended Beam Load Cell

Most commonly used in tank mounts and truck scale mounts.



### Double Ended Beam Mount

The Double Ended load cell mount, plated alloy steel, or the stainless steel and hermetically provides a low-profile, sealed weighing assembly ideally suited for medium to high capacity tank and hopper scales and all types of process weighing/control in most types of industries and environments.



### Hydrostatic Load Cell

Hydrostatic load cells are totally immune to failure from water or high pressure wash down. They will even operate indefinitely totally submerged. They are not just water "resistant" but actually immune. They are also totally immune to failure from lightning, power surge, or welding current. They surpass the claims of "hermetic seals", NEMA 4X ratings, and IP-68 ratings.



### Compression Load Cell

Compression-only load cells are ideal for structural and materials testing, and compressive force measurement applications. The load cell's design helps resist errors caused by extraneous bending and side loads.



### Weigh Bars

The Weigh Bar was designed to overcome the shortcomings of the load cell and to provide the user with a rugged, highly reliable and linear load sensing device at reasonable cost. More than thirty years of extensive use in industrial, farm and transportation applications has demonstrated that the Weigh Bar has met these requirements. The Weigh Bar design makes it possible to produce sensors for a wide variety of applications.



### ITA Integrated Tank Assembly

The ITA is an innovative self-contained low profile weighing assembly with an integrated load cell and mounting assembly. The ITA design allows up to 3° off its axis without affecting weighing accuracy. The durable, stainless steel welded construction prevents intrusion from moisture or chemicals; providing years of service in the most severe environments. Integral to the ITA design is its uplift restraint and side load protection; eliminating the need for check rods or stabilizing hardware in most applications.

#### ITA Medium Capacity:

1000 lb—125,000 lb (454 kg—56,699 kg)

#### ITA Heavy Capacity:

150,000 lb—450,000 lb (68,039 kg—204,116 kg)

